

the LawnShed

All you need for the perfect backyard

A LAWN LOVER'S GUIDE

In this issue:

THE MACROS

We discuss what is meant by NPK and the roles these macro nutrients play in our soil and lawn

DRESS TO IMPRESS

We give you tips on how to make sure your lawn impresses all your guests as the entertaining season is upon us

CRICKET ANYONE?

We share our guide for creating a top notch backyard cricket pitch

KNOW THY ENEMY

We look at the early warning signs that can keep you in the loop on the scariest of all lawn pests. The Lawn Armyworm.



A LAWN LOVER'S GUIDE

Editor's Note	03
Mowing: How to get a better lawn	04
Dress your lawn to impress	06
Guide: How to create a backyard cricket pitch	08



What to expect from La Nina (again)	10
Product Profile: Primo Maxx®	12
Pest Profile: Lawn Armyworm	16
The tools you need for your lawn	18

Our top tips this Summer	19
The Macro Nutrients: NPK	21
Our Details	24



Editor's Note



It's been overwhelming the response we have seen from our 1st ever edition in Spring, thank you so much for all the feedback, so here we go, rolling out another action packed edition.

As this is our Summer Lawn Lover's Guide it makes sense that I talk about how the increased soil temperatures will impact our lawn.

Spring has come and as of writing this it's been exceptionally mild, with above average rainfall and floods affecting the eastern seaboard. Forecasts are still expecting La Nina to continue into Summer but conditions will alleviate by January.

So what does this all mean? It means the early part of the growing season and beginning of Summer will see lower soil temperatures than expected. This is perfect for Lawn Armyworm eggs and number development. Wet conditions that favour leaf diseases will be rife in December as temperatures increase but rainfall is still very present.

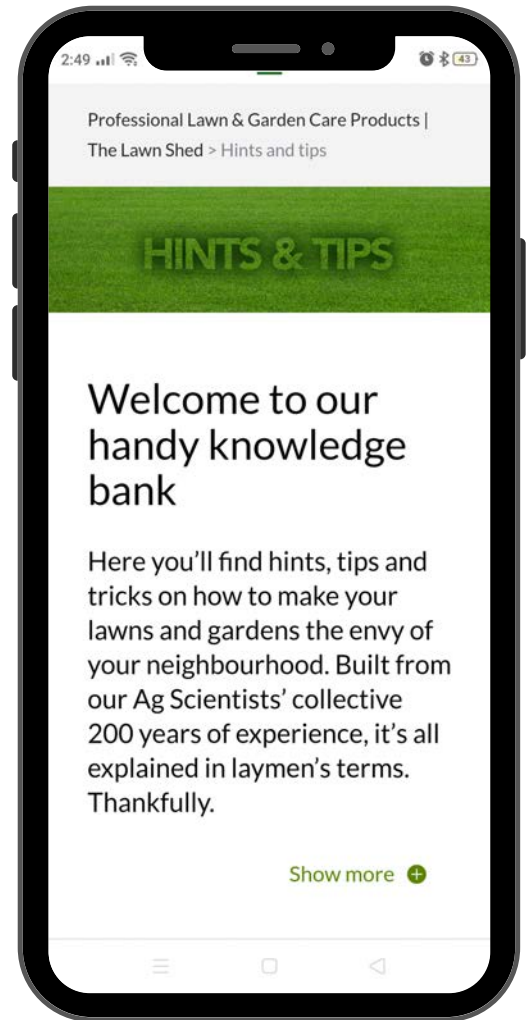
Come January, things will get interesting, if the forecast is accurate and rainfall is back to normal, then we can expect a sudden surge in soil temperatures. An increase in sunlight will be just what your lawn is craving.

Once the end of La Nina comes we will see lots and lots of growth! Our lawns will suddenly have the sunshine they desire and a soil full of moisture.

So in this issue we have tried to cover topics relevant to just this, such as plant growth regulators (PGR) and dealing with La Nina, plus we've added some extras about turning your lawn into a cricket pitch and getting your lawn ready for entertaining.

If this guide leaves things unanswered or if you would like to suggest some topics for our next guide, then please contact me at help@thelawnshed.com.au because, I love talking lawn.

Ian Thompson
Master of Agriculture (Turf Management)



Mowing: How to get a better lawn

"PGRs make good lawns, great"

Plant growth regulators or PGRs are going to be a highly sought after item this Summer, with La Nina driving a lot of lawn growth, in particular, leaf growth.

In November and December we will see our lawns putting on lots of vertical growth and with extra cloud cover present the lawn grows as upright as it can, searching for sunlight.

Come January, rainfall is expected to return to normal conditions. We're excited to see the back of La Nina but keep in mind our soil is full of moisture and this sudden burst of sunlight and heat will see a huge surge in growth on most lawns.

Plant growth regulators are extremely handy in slowing this growth to a manageable level. Not only will they reduce the mowing and reduce the clippings they will actually make your lawn healthier.

With a reduction in upright growth, the lawn starts to focus on the below ground parts, making it stronger and thicker and improving the use of water.

Growth regulators act by preventing the hormone gibberelic acid from creating cell division that allows for leaf elongation.

PGRs like Primo Maxx or Marvel Ultra can be applied fortnightly or monthly to keep your lawn in check.

They are truly amazing products and are a vital component in any greenkeeper or home lawn arsenal.

Once you start using a PGR you (and your neighbours) will truly love your lawn.

[Check out our article on PGRs to learn more about the science in easy-to-understand language.](#)

SECRET OF THE PROS



Plant growth regulators make good grass great and are a vital component on every finely cut turf surface



WWW.THELAWNSHED.COM.AU



Dress your lawn to impress

This entertaining season:

Remove the weeds

The biggest blight on a lawn during the entertaining season is weeds. Being outdoors in an Aussie Summer screams games of backyard cricket, BBQs and slip and slides. Protect yourself from Bindii and other thorny weeds by grabbing yourself some [Turf Control](#) and treat them ASAP.

Getting it thick and dense

A little extra wear is likely due to increased traffic across the lawn. So get some Lawn Play Renovate Lawn Fertiliser onto your lawn to help increase growth. Also, make sure to increase the regularity of mowing as this has been scientifically proven to increase density of your lawn.

Protect your lawn from insects

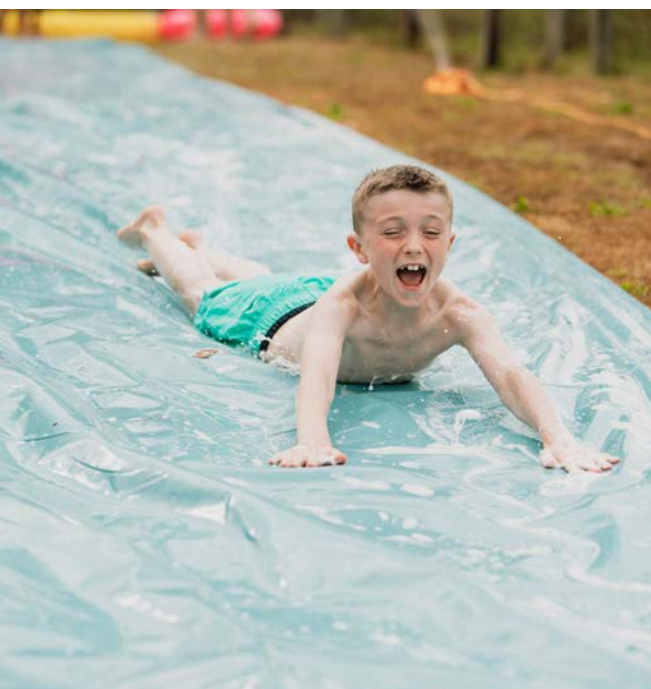
Imagine the embarrassment of your lawn falling apart under the feet of your guests. African Black beetle attack the roots of your lawn so protect against them by knocking the larvae for six with Acelepryn.

Getting colour

If you're looking to really impress this Summer then impress with the most beautiful green lawn in the street. Lawn Play Enhance and Lawnganics Brilliance are both brilliant greening products that use scientifically developed formulations to boost the plants natural greening processes.

Golf Green/Cricket Pitch

Really looking to show off this season look at using a PGR to help create a golf green or cricket pitch to get your guests up and enjoying the festivities.



IMPRESS YOUR GUESTS THIS SUMMER



The best lawn isn't that far away, purchase our Premium Lawn Care Pack and get it started on the right path today.

Professional quality products and the advice to match.

WWW.THELAWNSHED.COM.AU

How to Create a Your Best Backyard Cricket Pitch

Yes - the driveway is great for bounce. But you'll lose heaps of skin taking catches. So that's why we've put together this pitch preparation guide for your home turf.



Step 1 Know your grass. If you've got a popular grass like kikuyu, couch or buffalo- you're good to go. But those with grass like ryes or fescues will need to reseed it.

Step 2 Stick your Stumps onto your green bin and wheel it down to the strikers' end. Measure out your cricket pitch. You can decide the length but a real pitch is 20.12 metres long and 3m wide.

Step 3 Cut your cricket pitch. Grab your mower and start cutting the grass down slowly - just a couple of levels at a time because mowing it too short, too quickly will damage your pitch. When your grass is down to just 5mm stop.

Step 4 Mark out your creases with talcum powder and you're good too go. However ... if

you want to become a cricketing legend over the summer break, follow the Pro tips below.

Step 5 Grab yourself a stiff broom and brush the pitch. This will highlight any stubborn bits of grass that you will then cut off.

Step 6 Mark out your creases with white chalk spray paint using a straight bit of wood.

Step 7 Pick up a water roller from your local hire shop. Slightly water the pitch and then roll it flat. Don't use too much water as this will make it mushy. A light sprinkle should do the job.

Step 8 Once it's dry - let play commence. Keep it mown low and roll it (if you can) before every game day. It shouldn't need any more watering.

IS YOUR LAWN READY FOR ITS OWN WORLD CUP?



Keeping your lawn in tip top shape is simple, purchase our Backyard Sportsground Pack and save it from destruction today.

Professional quality products and the advice to match.



What to expect from La Nina (again)

Plus, how to deal with it

What to expect

It's still a bit early for us to know exactly what's in store for us this Summer, after all we're trying to predict the weather.

The prediction is that we will see the continuation of La Nina until the end of the year, with it predicted to break in early January. Fingers are well and truly crossed here.

Above normal rainfall is predicted resulting in a slow start temperature wise to the season. However, be aware that this can change fast - the early rain will allow for nice thick lawns but this will also encourage Lawn Armyworm development. By January if we see high temperatures and a soil profile full of water we can expect huge levels of growth. After two years of extended rain periods the lawn hasn't had to chase water so roots are shorter than previous times.

How to deal with it

Manage the excessive leaf growth with plant growth regulators like Primo Maxx. This will help make the lawn thicker rather than allow it to become long and thin.

Add Lawn Play Seavival into your lawn care program, the 3 hormones in this product will help drive root development of the lawn, crucial if Summer turns dry at the end of the season.

Monitor your lawn for Lawn Armyworm damage and check around your house, particularly under eaves for egg sacs that the moths lay as there way of spreading.

Lastly, sign up to our newsletter for more up to date weather and pest warnings.



RENOVATE YOUR LAWN THIS SPRING

La Nina products



Your dream lawn isn't out of reach, purchase our Spring Starter Pack and get it started on the right track today.

Professional quality products and the advice to match.

WWW.THELAWNSHED.COM.AU

PRODUCT PROFILE: PRIMO MAXX



Primo Maxx is a PGR and that stands for plant growth regulator, it does exactly as the name suggests, it regulates plant growth, importantly, in a way we want.

Have you ever noticed during the growing season your green bin (for those lucky enough to have one) is completely full of grass clippings leaving no room for the rest of your green waste?

Have you ever noticed you mow your lawn only to come home the next day and think it's grown an inch or two?

Well that's where plant growth regulators like Primo Maxx come into their own. Not only will they slow vertical growth but they decrease the internodal length (see below image) which creates a much tighter denser lawn.

To put it simply, it's a better lawn with less work...

In the case reducing mowing and clippings isn't enough for you then consider that treated areas will use water 30% better! How does it do this?

Well, there's actually a combination of factors which contribute to this:

- Plant growth regulators create smaller leaves with less surface area for transpiration (moisture loss from the leaf).
- With reduced top growth the plant starts putting its energy into growing roots, this allows for a larger reservoir of water to draw from in the soil
- The density increase will reduce the evaporation of moisture directly from the soil.

PRODUCT PROFILE: PRIMO MAXX



How to get the best results on your lawn

Plant growth regulators are quite simple to use really.

- Simply calibrate your sprayer
- Add the desired amount of product and water
- Then spray evenly over the whole lawn
- Apply every 2-3 weeks as needed over the growing period

For best results, you can add a little iron from Lawn Play Enhance into the same mix to get it dense and dark green.

Not sure about calibrating sprayers or rates, contact the lawn genius who can easily assist with a plan of action.

Want to learn about the Simple Science that is Turf Plant Growth Regulators?

In a sentence, they inhibit the hormone (gibberellic acid) that promotes cell division and elongation.

In a more long-winded explanation though...

The turfgrass plant is an amazing machine with lots of processes occurring within the plants leaves and roots. Some of these processes, particularly growth processes, require plant hormones.

PRODUCT PROFILE: PRIMO MAXX



While plant hormones may be a scary new concept to a lot, did you know a lot of gardeners apply root hormones on a regular basis? They just don't realise it.

Seaweed solutions like Lawn Play Seavival contain hormones like cytokinins (si-toe-ki-nins) which initiate root development and auxins (aux-ins) which do a whole host of things like assist with flower development. So that's why you get such great results from seaweed on lawns and gardens. You're supplementing the natural hormonal processes within the plant.

While auxins and cytokinins are hormones we are quite keen to encourage and we like to support the plant by adding more, gibberellic acid (jib-er-relic) is one we aren't so keen to promote. This hormone initiates cell elongation and if you have a fast-moving lawn you are going to hate this guy.

So, now that we've given a bit of the background on plant hormones it becomes simple. The active ingredient in these plant growth regulators (trinexepac-ethyl) blocks the plant from producing too much gibberellic acid. Without it there's less cell elongation and slower growth.

[Purchase today.](#)

SECRET OF THE PROS



Plant growth regulators make good grass great and are a vital component on every finely cut turf surface



WWW.THELAWNSHED.COM.AU

PEST PROFILE: LAWN ARMYWORM



I know we covered Lawn Armyworm in our Spring edition but I really can't stress how damaging and devastating this lawn pest can be. In large numbers they can literally chew through a lawn overnight.

This issue we wanted to give you a bit more information, specifically how we can track it and monitor its progress.

Lawn Armyworm loves warmer temperatures so those of you reading in Tasmania have probably never even heard of the pest let alone seen one.

They lay their eggs in Autumn after rainfall, given we have had plenty of rainfall in Autumn it makes for a bumper Armyworm season.

The season kicks off as temperatures warm up in Spring, but not Australia wide, it kicks off where temperatures are warmer. During this time the damage is almost negligible, people don't really notice as the numbers are low. What happens though is the Armyworm has 2-3 generations per year, so like the lower branches of a family tree, before you know it the numbers are huge.

As the numbers increase and the warmer weather reaches the middle of Australia you will see Armyworm marching across the Queensland border into Australia by December, from there its only another few weeks before they are into Sydney then next stop the southern states.

So our recommendation is stay in the loop, we care about your lawns too, that's why we monitor pest and disease and advise how to check, where to look, how to treat for pests and diseases in our newsletter.

STAY UP TO DATE WITH PEST AND INSECT ACTIVITY



Subscribe now to our newsletter for exclusive access to great competitions and giveaways. Not to mention, the expert tips at the right time of year, taking the guesswork out of your lawn care regime.

First Name

Email

Submit

The right product at the right time, applied in the right way makes for great results. Plus it's easier.

Professional quality products and the advice to match.

WWW.THELAWNSHED.COM.AU

The tools you need for your lawn

Lawn care really doesn't need to be overly complicated. In fact it can be cheap and easy with the right tools, the right products and the right advice at the right time.

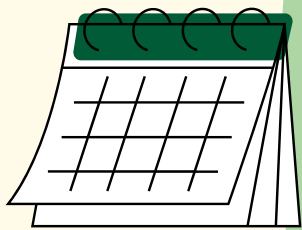
A spreader and sprayer

You will need to apply products, so make sure you get yourself a quality spreader and sprayer, this will save you money and give you better, more even application. Not to mention how quickly you can apply products with the right equipment. We love easy.



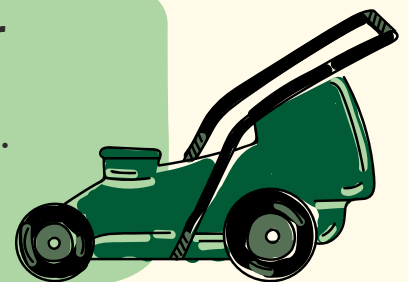
A calendar

Look into a program for your lawn, we have many programs where we combine lots of products, reducing the number of applications you need per year. Mark what to do and when, this will keep you on track and get the best results.



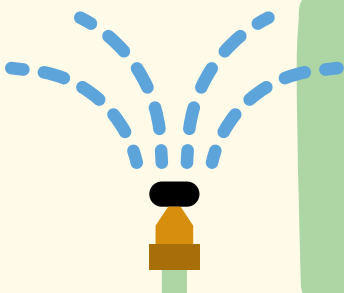
A self propelled mower, whipper snipper and blower

Mowing and edging should be a walk in the park. The better quality mower you purchase, the easier it will be. A lawn looks a lot better with the edges done and a blower will get more use than you realise.



A watering system

An irrigation system, or at least a set of sprinklers that make it easy to water your lawn. It's Australia and when La Nina isn't hanging around or products need watering in, then it takes time to water, more than a simple hose can do.



Our Top Tips This Summer



Look out for Armyworm

It's likely to be present. Keep an eye on our newsletters, social media groups and your lawn. Knock out any sacs under your eaves. Monitor your lawn from December through March.



Read up on and at least consider applying a PGR

It's going to be one of those years where a PGR is important in developing a healthy lawn and managing your mowing with all the rain. We don't want to mow when it's wet but if we don't mow its 10ft tall...



Summer is about enjoying your lawn

The title says it all, so get out there and enjoy it, BBQs, cricket matches, Bocce, Sunday afternoon picnics and even throw out a rug and enjoy a book in your backyard.



Keep an eye out for leaf spot diseases

Wet weather, warmer temperatures lead to leaf diseases. Manage your nutrition with a controlled release fertiliser.



Mowing wet grass

It's okay to mow a wet lawn on the following conditions. You don't leave wheel marks and the leaf is dry.



Prepare for Autumn

Make sure your lawn is in a good space by the end of the season so it can take on Autumn and the cooler months.



Get on a program

We have lots of great programs. You don't have to follow them perfectly but there are some key events around herbicide and insecticide timing that will give you far better results.

FOR THE NOT SO FUN GUYS

Disease control doesn't need to be intimidating.
Impala® gives you great disease protection and cure.



WWW.THELAWNSHED.COM.AU

DIVE DEEP INTO THE SOIL WITH

THE MAJOR ELEMENTS: NOT ALL FERTILISER IS CREATED EQUAL



Nitrogen - it's the most important element for lawns, it drives the most important growth habits, but we can get fixated on this element.

Beyond the element of nitrogen, what are the other elements that matter, what concentration should they be in?

In this issue we aim to cover what a N:P:K ratio actually means, the correct ratios of the major nutrients and their role in the soil profile in as much detail as we can in a few pages, so stay tuned for our simple science.

What is the NPK ratio?

NPK refers to Nitrogen (N), Phosphorous (P) and Potassium (K), but it is often referred to as an NPK ratio. Let's be clear, in Australia the figures shown on a bag do not refer to it as a ratio but instead as a percentage of composition. For example, a 10:10:10 refers to 10% composition of nitrogen, phosphorous and potassium.



In higher quality fertiliser, it's other nutrients that aren't NPK like calcium, magnesium, iron as well as capsulated microbes.

The actual correct ratio of NPK

All that aside it's simpler to look for a nutritional value that suits your lawn's requirements. Not only should a fertiliser contain the nutrients in the appropriate rates but they need to be released in the right rate also. For example slow release nitrogen is good but are the other elements released in the same fashion?

Like our bodies that need carbohydrates, proteins and sugars in a desired ratio, so does our lawn. That's why we worked with some of Australia's leading nutritional experts to develop our Lawn Play All Rounder. Not only is the NPK in a ratio that is desirable for lawns it contains the microbes to break it down into plant available forms.

The role of major nutrients in plant development

The lawn or turfgrass plant is not alot different from other plants and so hopefully this learning is valuable because this can help you improve some of your vegetable garden as well.

The major elements NPK are major elements across all plants.

In this example there is 70% of "others" that make up the weight. If this was true ratio it would be 1/3 of each nutrient. Check the label as this can be w/w or w/v meaning weight over weight or weight over volume for liquids. This is handy for calculating the actual grams of N,P or K applied to the lawn or garden.

What these "others" are depends on the quality of the fertiliser, in some cheaper fertiliser it's fillers, heavy metals and even sand.

Nitrogen

Drives leaf growth, it's that simple, whether it be lawns or if you are trying to grow prize winning Spinach.

Nitrogen is the biggest driver of leaf growth and colour. This doesn't mean you need to go for the fertiliser with the highest amount of nitrogen, unless you want to be mowing daily

Phosphorous

This element is key to the development of growth especially cell division at the growing tips. So this is a key element in driving root development. It's a key component in starter lawn fertilisers like Lawn Play Underlay as the turf has lost all its roots in the journey from farm to you. Whether it be lawn or plants this works, so if you are looking to grow prize winning root or tuber vegetables like carrots and potatoes this will have the desired effect.

Potassium

It's used throughout the plan to increase turgidity (strength) in lawn grasses but for other plants its all about flowers, so that results in more fruit.



They all play their role and are vital to the lawns growth. On top of major nutrients there are also minor nutrients which play smaller roles but still need to be included in your soil for a healthy lawn,

All in all it's complicated and if you want to learn more we would love to chat to you about it. So reach out to our resident Lawn Genius.

IS YOUR FRIDGE EMPTY?



Our lawns take nutrients from the soil, just like we do from our fridge. The better the quality of the nutrients, the better the health.

WWW.THELAWNSHED.COM.AU



Contact Us



[@thelawnshed](#)



[@lawnshed](#)



[LawnFlix](#)



help@thelawnshed.com.au

